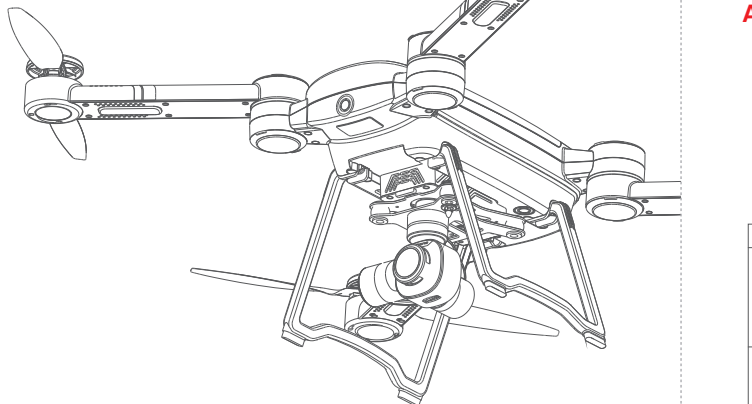




# FAST ADVANCED GUIDE

BYRD



GDU Byrd

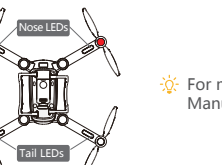
**Please carefully read the following information before operating the aircraft, in order to avoid any property lose and ensure your personal security.**

**WARNINGS:**

- This document is designed to help you to accomplish the first flight. Please read the User Manual online for more information.
- The aircraft should not be operated by any person under the age of 18.
- Do not fly in crowded public areas.
- Do not fly in places that are restricted by law or relevant authorities.
- It is recommended to fly in good weather and outdoor wide-open space.
- Keep away from places with children.
- Do not fly if you are drunk, tired or dizzy, etc.
- The diagrams are only for references, subject to our available products for details.



## Aircraft indicators light instructions:



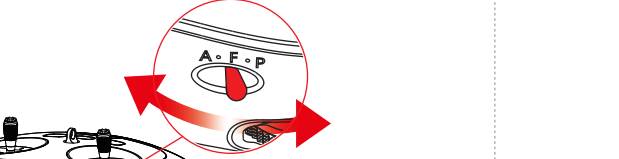
For more details, please refer to the User Manual of GDU Byrd.

	Status	Nose LEDs	Tail LEDs
Normal State	GPS	Red light on	Green light on
	P-vision	White light on	
	A Mode	Red light on	Yellow light on
Compass Calibration	Return to home	Red light on	Blue light on
	Enter the calibration mode	Yellow light on	Yellow light blinks
	Level calibration success	Yellow light on	Green light blinks
	Calibration successful	Yellow light on	Green light on
	Large deviation, calibrate again	Yellow light on	Yellow light on
Abnormal State	Calibration failed, IMU error	Red light on	Red light on
	Low battery	Red light on	Green light blinks (P Mode)
	Serious low battery	Red light blinks	Yellow light blinks (A Mode)
	Losing connection with the remote controller	Red light blinks	Red light blinks

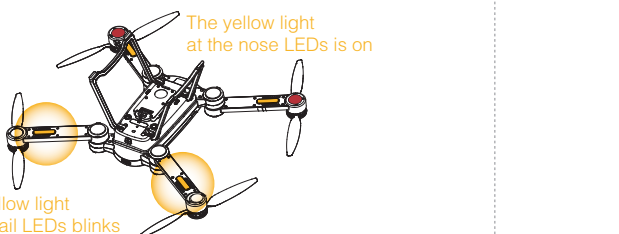
## 1. Compass Calibration:

- 1 ) Recalibrate the compass if the region emerges with obvious changes.
- 2 ) If the aircraft drifts or revolves on its own axes, recalibrate the compass.

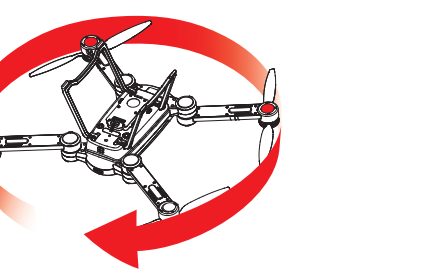
Quickly toggle the Flight Mode Switch back and forth for several times.



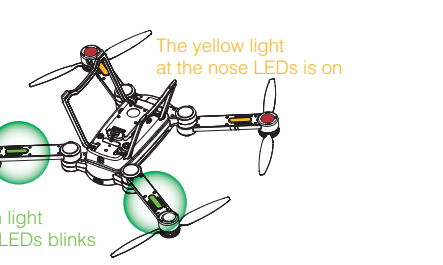
When the yellow light at the nose LEDs is on and the yellow light at the tail LEDs blinks, the calibration mode is activated.



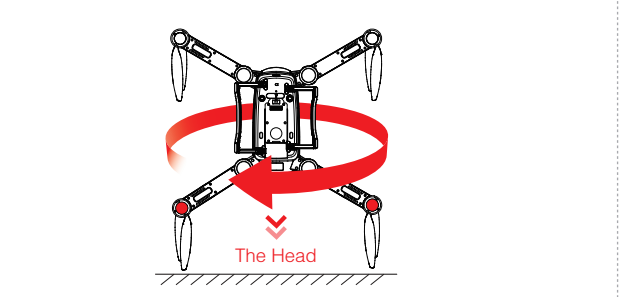
Hold the ventral upward and rotate the aircraft clock-wisely and horizontally.



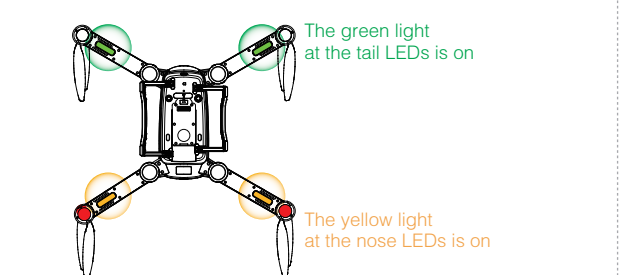
When the yellow light at the nose LEDs is on and the green light at the tail LEDs blinks, horizontal calibration is accomplished.



Hold the aircraft head down and rotate it clock-wisely.

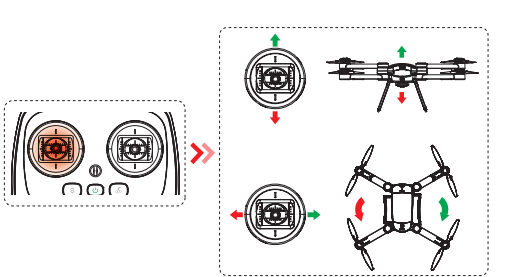


When the yellow light at the nose LEDs is on and the green light at the tail LEDs is on, vertical calibration is accomplished.

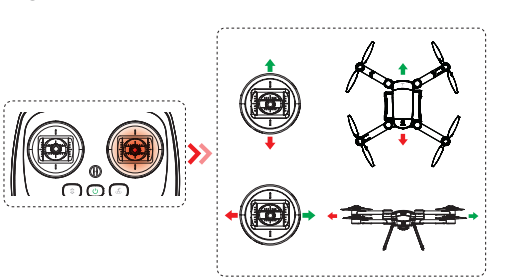


## 2. Control Sticks:

The left stick controls altitude and direction.

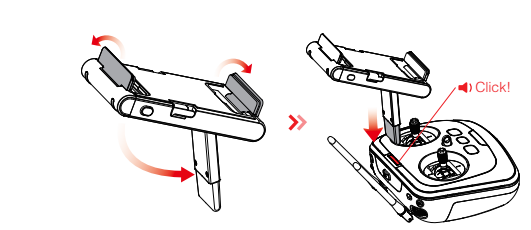


The right stick controls forward, backward, left and right movements.

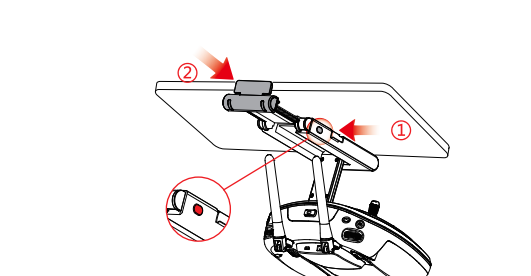


## 3. Remote Controller Holder Installation:

Tug the joint lever, unfold the top and bottom clamps, and then insert the fully unfolded limiter vertically into the installation hole on the remote controller.

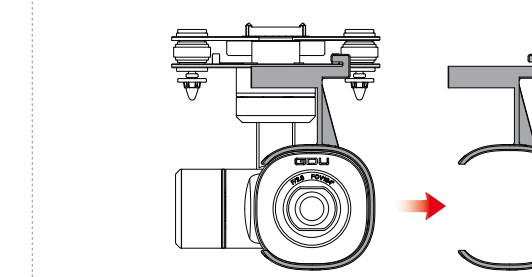


Unfold the limiter and fix the electronic device.

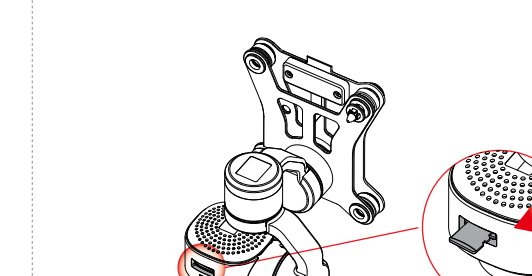


## 4. Gimbal Installation:

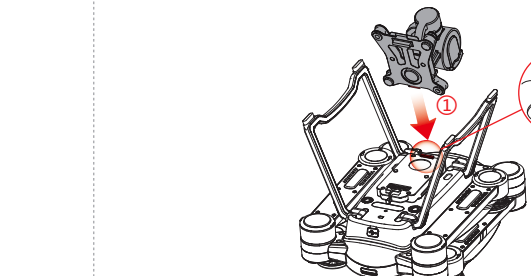
Move the protective cover and the bearings respectively.



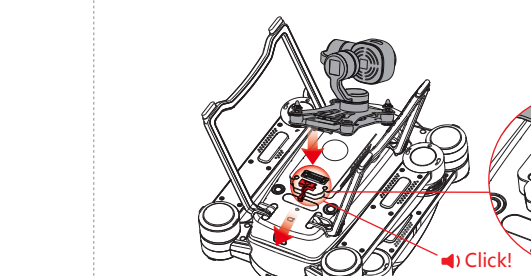
Insert the Micro SD into the position shown on the gimbal.



Turn off the power, and then insert the front snap joint into the mounted hole.



Pull back the back strap and press down the gimbal.

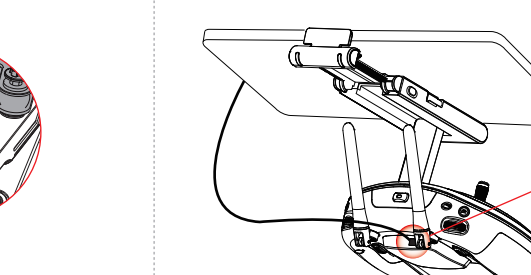


## 5. Gimbal connection:

Download the APP at APP stores.

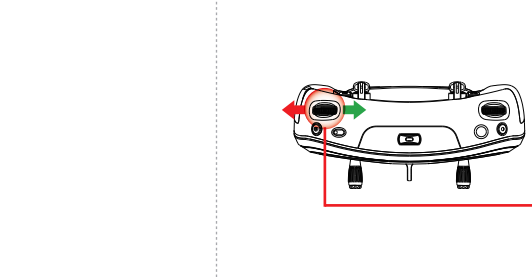


Please use USB cable to connect mobile devices and remote control, According to the prompt operation equipment, And wait for aircraft feedback signal within the APP.

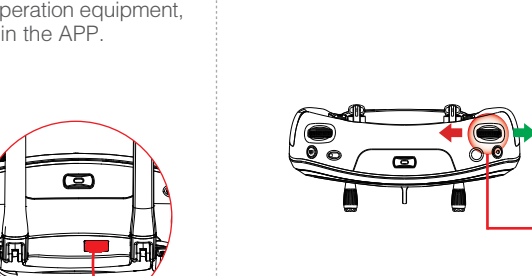


## 6. Gimbal Control:

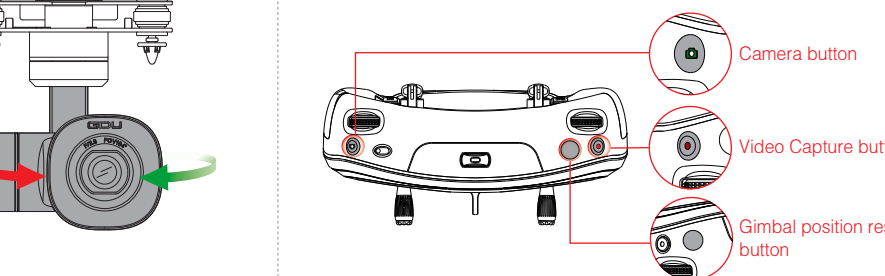
The left wheel dials for yawing.



The right wheel dials for pitching.



The camera button, video capture button and position reset button are all click buttons.



For buttons C1 and C2, it's capable of customizing functions in the APP according to your requirements.

